

Case Study: Star Casino Hotel, Sydney, Australia



Project Overview: The Star Casino Hotel in Sydney, Australia, embarked on a transformative project to enhance the luxury and sophistication of its guest rooms. Seeking a timeless and elegant solution, the hotel collaborated with our trusted distributor in Australia to implement our CST MV 02 SILIVA stone veneers for bed back applications.

Product Used:

Stone Veneer Type: CST (MV) 02 SILIVA

Marble surface

Thickness 2mm

Application: Interiors, Bed Back

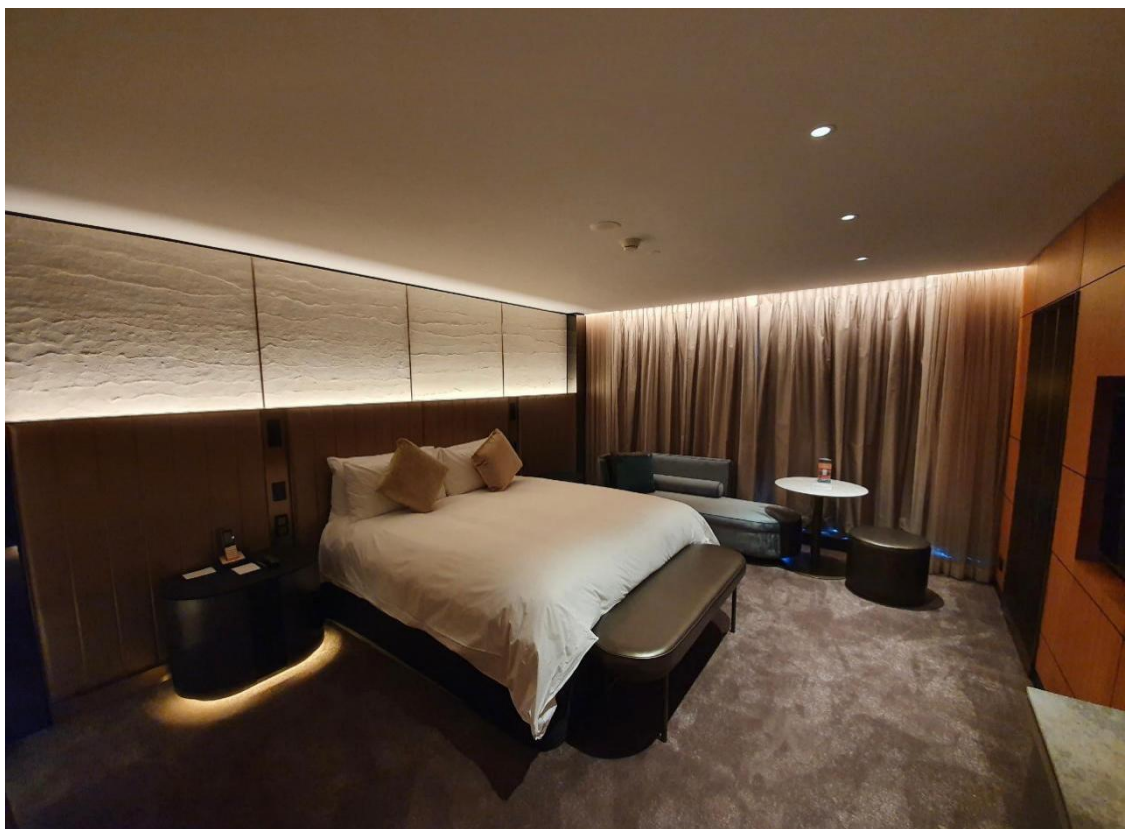
Challenges: The design team at the Star Casino Hotel aimed to create an opulent yet cozy ambiance in each guest room. They sought a material that would not only exude luxury but also withstand the demands of a high-traffic hospitality environment. The challenge was to find a solution that seamlessly blended aesthetics with durability.



Solution: Our CST MV 02 SILIVA stone veneers emerged as the perfect solution. Renowned for its exquisite texture and the timeless appeal of natural stone, SILIVA brought a touch of sophistication to the bed backs. The distributor worked closely with the hotel's design team, ensuring a seamless integration of the stone veneers to meet the project's aesthetic and practical requirements.

Benefits:

1. **Aesthetic Elegance:** CST MV 02 SILIVA's natural charm and unique veining patterns added a touch of elegance, creating a luxurious atmosphere within the guest rooms.
2. **Durability:** The inherent durability of the stone veneers ensured that the bed backs could withstand daily use without compromising on visual appeal.
3. **Customization:** Our stone veneers offered a range of customization options, allowing for the selection of hues and textures that perfectly complemented the hotel's interior design scheme.



Results: The implementation of CST MV 02 SILIVA stone veneers elevated the overall aesthetics of the Star Casino Hotel's guest rooms. The bed backs became focal points, creating a sense of grandeur and luxury that resonated with the hotel's commitment to providing an exceptional guest experience.

Client Testimonial: "The CST MV 02 SILIVA stone veneers exceeded our expectations. The natural beauty, durability, and customization options made it an ideal choice for our bed back applications. Thanks to our distributor's expertise and the quality of the product, our guest rooms now exude a timeless charm that enhances the overall luxury experience at the Star Casino Hotel."

This project exemplifies the successful collaboration between our distributor in Australia, the Star Casino Hotel, and our premium stone veneers, showcasing the transformative impact of natural stone in high-end hospitality spaces.